



40th Anniversary Special Event Station

Rules and Guidelines

W8WKY Call Guidelines for the SES

- All use of the club call W8WKY must be approved by the call trustee Barry Youmans KI8B.
 - Registration of a band and mode at the registration site confers operation approval.
 - The registration site is the only approval method for the W8WKY call for the SES. No verbal or other approvals will be given.
- Operators may operate only within their licensed class – use of the club call does not confer any additional band or power privileges.
- Operators may only operate on the band and mode they registered for during the given timeslot(s).
 - Operations may not begin before the registered time nor extend past the registered time.
 - All times on the registration site are listed in UTC. The official operation period (excluding the picnic) is 2017-08-19 0000Z to 2017-08-26 0400Z. SES Picnic operation will be from 1300Z to 2359Z on the 26th.



W8WKY Call Guidelines for the SES

Operation is permitted only in the following bands:

- 80m (3.875 listed w/ ARRL)
- 40m (7.285 listed w/ ARRL)
- 20m (14.275 listed w/ ARRL)
- 15m
- 10m
- 6m (no repeaters)

No use of the WARC bands is authorized (30m, 17m, 12m).

Recommend to operate in the general-class portion of the band.

Operation is permitted for the following modes:

- SSB
- CW
- Digital
- RTTY

Registration on the site for “Digital” is registration for any digital mode excluding RTTY.

N8JDM is planning to try at least one SES QSO with JT65!

W8WKY Call Guidelines for the SES

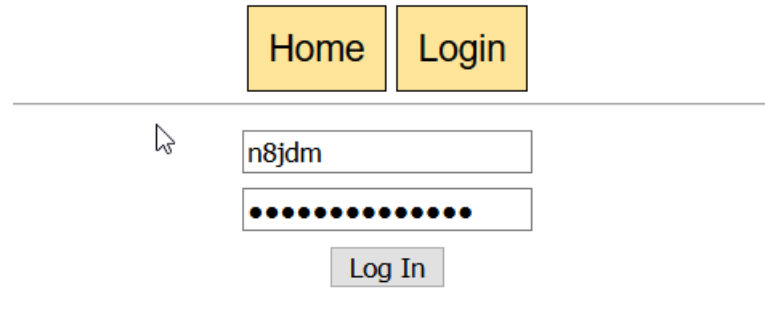
- All QSOs must be logged by the operator and all logs must be provided to the QSL Manager Jason McCormick N8JDM via the web interface on w8wky.org.
- All logs must contain the following information for each QSO:
 - Callsign
 - Date and start time of the contact
 - Frequency (not band)
 - RST
 - Mode
- When loading logs, you will be required to provide your callsign and county of operation. These will appear on the W8WKY Certificate or QSL cards.

Registration for a Time/Band/Mode

1. Send an e-mail to qsl@w8wky.org requesting an account on the registration site. Provide your name, callsign, e-mail address, and a valid telephone number where you can be reached at during your planned operation(s).
2. Your call will be checked against the SARA membership roster. You must be a member in good standing (i.e. paid) to use the club call. If you are not a member, now would be an excellent time to join!
3. Your account will be created and you will receive back the following:
 - Login information for the registration site
 - Load key information for the QSL site
 - The information contained on slides 2-4 of this presentation as a PDF
 - A link to the directions on how to use both sites

Registration for a Time/Band/Mode

4. Browse to <https://w8wky.org/scheduler/> and click **Login** at the top of the screen.
5. Enter your username and password and click **Log In**



The screenshot shows a login interface. At the top, there are two yellow buttons labeled "Home" and "Login". Below these is a horizontal line. Under the line, there is a text input field containing the username "n8jdm". Below the username field is a password input field filled with black dots. A mouse cursor is positioned to the left of the username field. Below the password field is a grey button labeled "Log In".

Your username is not case-sensitive but your password is case-sensitive.

Registration for a Time/Band/Mode

To register for a time/band/mode first select the date you desire to operate. The dates are in UTC with a local time translation provided for convenience. Click on the date you want to operate on.

2017 SARA W8WKY Schedule

Sun 8/20	UTC	0000-0200	0200-0400	0400-0600	0600-0800	0800-1000	1000-1200	1200-1400	1400-1600	1600-1800	1800-2000
	Local	Sat 8/19 - 8 pm - 10 pm	Sat 8/19 - 10 pm - 12 am	Sun 8/20 - 12 am - 2 am	Sun 8/20 - 2 am - 4 am	Sun 8/20 - 4 am - 6 am	Sun 8/20 - 6 am - 8 am	Sun 8/20 - 8 am - 10 am	Sun 8/20 - 10 am - 12 pm	Sun 8/20 - 12 pm - 2 pm	Sun 8/20 - 2 pm - 4 pm
80m	CW	Reserve	Reserve	Reserve	Reserve	Reserve	Reserve	Reserve	Reserve	Reserve	Reserve
	SSB	Reserve	Reserve	Reserve	Reserve	Reserve	Reserve	Reserve	Reserve	Reserve	Reserve
	AM	Reserve	Reserve	Reserve	Reserve	Reserve	Reserve	Reserve	Reserve	Reserve	Reserve



Registration for a Time/Band/Mode

After selecting date, find the combination of the time, band, and mode that you want to operate and click the **Reserve** button in that slot.

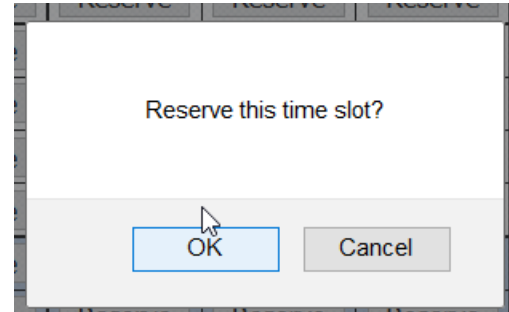
For example, click as below to operate on Sunday the 20th from 1200z-1400z (8am-10am) using 40m with a mode of SSB/Phone.

Sun 8/20	UTC	0000-0200	0200-0400	0400-0600	0600-0800	0800-1000	1000-1200	1200-1400	1400-1600
	Local	Sat 8/19 - 8 pm - 10 pm	Sat 8/19 - 10 pm - 12 am	Sun 8/20 - 12 am - 2 am	Sun 8/20 - 2 am - 4 am	Sun 8/20 - 4 am - 6 am	Sun 8/20 - 6 am - 8 am	Sun 8/20 - 8 am - 10 am	Sun 8/20 - 10 am - 12 pm
80m	CW	Reserve	Reserve	Reserve	Reserve	Reserve	Reserve	Reserve	Reserve
	SSB	Reserve	Reserve	Reserve	Reserve	Reserve	Reserve	Reserve	Reserve
	AM	Reserve	Reserve	Reserve	Reserve	Reserve	Reserve	Reserve	Reserve
	RTTY	Reserve	Reserve	Reserve	Reserve	Reserve	Reserve	Reserve	Reserve
	PSK31	Reserve	Reserve	Reserve	Reserve	Reserve	Reserve	Reserve	Reserve
40m	CW	Reserve	Reserve	Reserve	Reserve	Reserve	Reserve	Reserve	Reserve
	Phone	Reserve	Reserve	Reserve	Reserve	Reserve	Reserve	Reserve	Reserve
	RTTY	Reserve	Reserve	Reserve	Reserve	Reserve	Reserve	Reserve	Reserve
	PSK31	Reserve	Reserve	Reserve	Reserve	Reserve	Reserve	Reserve	Reserve
	CW	Reserve	Reserve	Reserve	Reserve	Reserve	Reserve	Reserve	Reserve

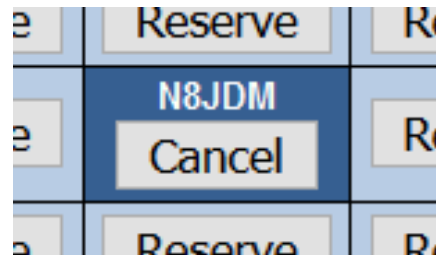


Registration for a Time/Band/Mode

A dialog box will appear asking you to confirm the slot. Click **OK**.



You will then be returned to the grid screen and will see your call marked as a reservation for that time/band/mode combination.



If you've selected the wrong time, or want to remove the reservation later, click **Cancel** below your callsign.

Registration for a Time/Band/Mode

Some additional rules that aren't enforced by the software:

- The last reservation slot on the registration software is through 8/26 0000Z (8/25 8pm EDT). The person signing up for the last slot on each band/mode ending on 8/26 0000Z may operate that band/mode until 8/26 0400Z (8/26 at midnight EDT)
- In order to provide as much opportunity for the membership as possible:
 - 8/19 and 8/20 - Please do not register for more than a four hour contiguous block between 6am EDT and 11:59pm EDT on an single HF band for SSB/Phone or CW.
 - 8/21 to 8/25 - Please do not register for more than a single two hour block between 4pm EDT and 11:59pm EDT on an HF band for SSB/Phone or CW.
 - If, on a particular day of operation, there are unclaimed blocks anyone may register for any open blocks regardless of the courtesy restrictions above.

During Operation

- Keep in mind that you are representing the Silvercreek Amateur Radio Association when operating as W8WKY and follow good operating practice and etiquette.
- Periodically announce that the station is being operated as a Special Event Station celebrating the 40th anniversary of the club.
 - All logs will be uploaded to Logbook of the World after the event
 - A special certificate suitable for printing will be available for download from w8wky.org after the event
 - w8wky.org and the club's QRZ page has QSL information for those wanting cards. You may wish to clarify, if asked, that the certificates are electronic only – no paper certificates will be mailed.
 - Be prepared to talk a little about the various activities the club participates in – Field Days, ARRL Special Service, Ohio ARES services, tri-county repeater operations, etc.



Calling CQ Example

An example “long form” CQ call:

CQ CQ CQ this is W8WKY calling CQ for the Silvercreek Amateur Radio Association’s 40th anniversary special event station. CQ CQ CQ this is W8WKY calling CQ. SARA is celebrating 40 years on the air with a special event station and certificate. This is W8WKY calling CQ and listening.

Another example:

CQ Special Event CQ Special Event. This W8WKY calling CQ for the Silvercreek Amateur Radio Association Special Event Station operating out of _____ County, Ohio. CQ Special Event CQ Speical Event this is W8WKY calling CQ for SARA celebrating 40 years on the air with a special operating event. W8WKY QRZ?



QSO Exchange

An example QSO when you don't want to ragchew and perhaps have a small pile-up:

W8WKY: QRZ?

KE5ETB: Kilo Echo 5 Echo Tango Bravo

W8WKY: Kilo Echo 5 Echo Tango Bravo, thank you for contacting the Silvercreek Amateur Radio Association's 40th anniversary special event station. You are 59 here in _____ county Ohio.

KE5ETB: Whiskey 8 Whiskey Kilo Yankee you are 57 here in San Antonio Texas. Congratulations on the anniversary.

W8WKY: Thanks and 73, QRZ?



Some Talking Points

If you are asked what the club does or are looking for some ragchew filler, here are some topics to discuss:

- SARA is an ARRL Affiliated Club and an ARRL Special Service Club
- SARA holds four Volunteer Examiner sessions a year
- SARA members participate heavily in ARES, including an Ohio ARES district coordinator and an ARES county coordinator
- SARA members volunteer to support local events such as the Akron Marathon
- SARA operates two repeaters that serve a significant portion of northeast Ohio
- Offers special-interest groups in Digital Mobile Radio (DMR) and Raspberry Pi
- Operates two nets weekly
- A number of club members are active contesters and event operators



After Operation

- All logs must be loaded into the club QSL manager site at <https://qsl.w8wky.org/qsl/load>.
- All logging software supports exporting logs in ADIF format. Consult the documentation, if needed, for your logging software. Export all of the contacts you made as W8WKY to an ADIF file and save it to a convenient place on your computer.
- Browse to <https://qsl.w8wky.org/qsl/load> in your web browser.

Loading Logs

Notes on loading the logs:

- If your logging software asks what fields to export in the ADIF file, you must provide **ALL** of the following or the load will not complete:
 - QSO Date
 - Time On (or Start Time depending on the software)
 - Call
 - Frequency
 - Mode
 - RST Received
- It would be unlikely, but if your software does not normally log in UTC ensure that the export times are written out in UTC.

Loading Logs

Once on the log loading page, you will need to enter your callsign, the load key that was provided to you when you registered for an account for the W8WKY callsign, your county of operation, and then select the file you exported from your logging software. Then click **Upload ADIF**.

W8WKY ADIF Loader

To use the loader enter your call sign, the load key provided by your club QSL manager in the *Load Key* box, select your ADIF file for uploading, and then click the upload button. The loader supports ADIF 2.0 and the ADIF v3.0 non-XML formats.

Callsign:

Note: Do not use any trailing /M, /P, etc.

Load Key:

ADIF File: W8WKY_40th_Oper1.adf

County:

Enter the Ohio county you operated from. If operating outside of Ohio, enter your county and state.



Loading Logs

After uploading the logs, a confirmation screen will appear. Scroll through the list to ensure that the log looks correct. You do not need to perform a detailed comparison, just check that the log appears to be correct and complete as it is no possible to correct a load after it has been committed. After the review, click **Commit QSOs** at the bottom of the table.

Hello N8JDM. The following QSOs were found in the ADIF file provided. Please review the QSOs and then click **Commit** at the bottom of the table. If there is a problem with any entry below, please click your browser's back button, fix your ADIF file, and re-upload.

Please note that this tool does not deduplicate QSOs so please make sure not to upload any duplicates.

Date	Time	Call	Freq	Band	Mode	RST	Operator
2016-10-30	19:34:52	FY5KE	21.400	15m	SSB	59	N8JDM
2016-10-30	19:30:21	D4C	21.385	15m	SSB	59	N8JDM
2016-10-30	19:07:46	VA7RR	14.2529	20m	SSB	59	N8JDM
2016-10-30	19:04:44	VE5C	21.2877	15m	SSB	59	N8JDM
2016-10-29	12:37:41						



Note: The callsigns are blacked out here for privacy. The full callsign is displayed on the site.

Loading Logs

After committing the QSOs, you will receive a confirmation page. A very long string of letters and numbers will appear listing a “Transaction ID”. You do not need to record/keep that ID unless you received an error or otherwise think something did not work properly. The ID is for debugging/support purposes only.

W8WKY QSL Print System ADIF Loader

Thanks for your submission, N8JDM. These QSOs have been saved. You may either close this window or [load another ADIF](#).

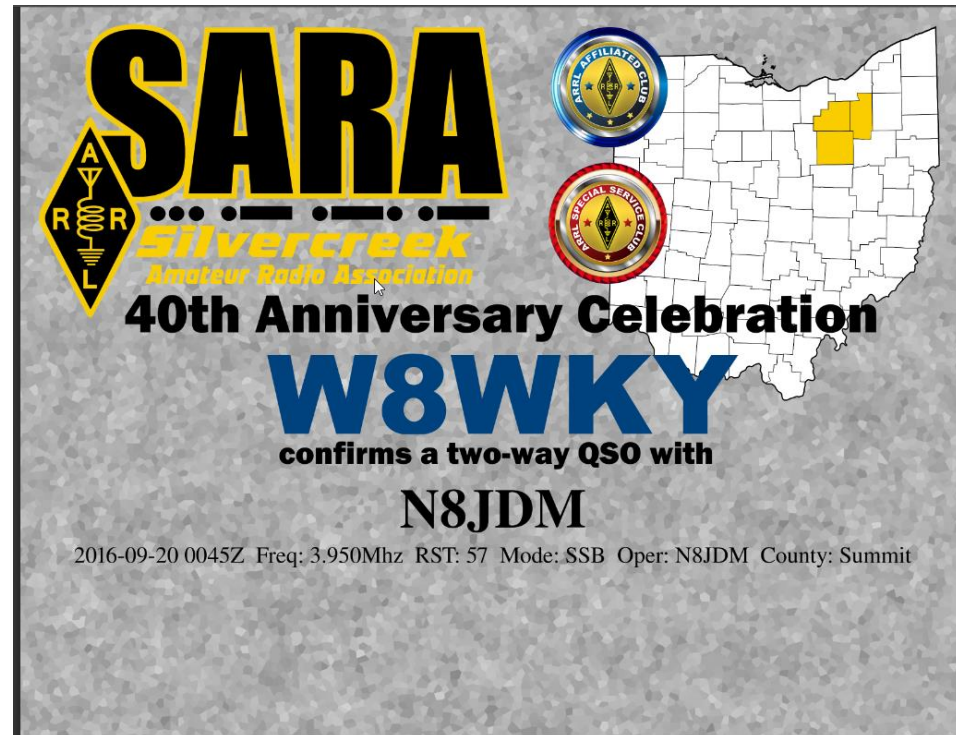
Transaction ID: 2746AC3109272EA034D3115057E24176F6BC2CC1B9D2E0EE42F94B101F74BDC7

Once you upload a log file and are on the review screen, DO NOT hit your browser’s back button. You cannot upload the same logfile twice within a 5 minute period or you will receive an error. Similarly, you must click the Commit QSOs button within 5 minutes of uploading the log or the transaction will be canceled and you will receive an error.



Loading Logs

If you want to confirm your load completed successfully, or if you just want to see the system in action, browse to <https://qsl.w8wky.org/qsl> and enter one of the callsigns you worked during your operation.



Help

If you need help or have questions about any details regarding radio operation rules or use of the W8WKY callsign, contact one of:

Gary Shorter AA8CS
Barry Youmans KI8B
Zeke Zadiraka AB8OU

For technical issues with the registration or QSL site, contact:

Jason McCormick N8JDM
John Wagner N8CD